

EPG[®] CONSULTING

SUPPLY CHAIN CONSULTING

Holistic. Independent. Sustainable.
From planning to realization.



Holistic supply chain consulting from planning to realization



PLANNING

Distribution Network Studies
Sales & Operations Planning
Master & Architectural Planning

CONSTRUCTION

Building Design
Engineering Management
Construction Management

WAREHOUSE

Warehouse Design
Optimization & Mechanization
In- & Outsourcing
Tender Management

IT

Process Engineering
Software Implementation
Inventory Slotting & Optimization

TRANSPORT

Consulting & Benchmarking
TMS Implementation
Tendering & Contracting

MANAGEMENT

Project Management
Client Representation
Interim Management

PRODUCT
FACTSHEET

EPG[®] | Ehrhardt
Partner
Group
Smarter Connected Logistics™

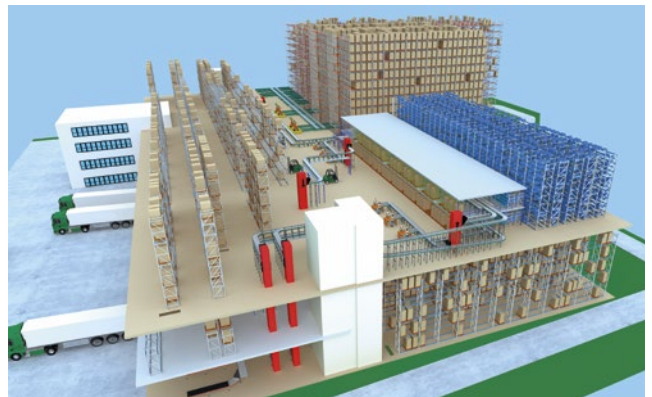
OUR SERVICE PORTFOLIO – NEUTRAL AND MANUFACTURER-INDEPENDENT

LOGISTICS CONSULTATION AND PLANNING

Warehouse planning – integral approach from the outset

An excellent logistics concept requires a planning stage which takes all criteria into account. That's why EPG Consulting will guide you through all planning stages. Thanks to decades of expertise and a software-based process, potential bottlenecks can be identified in good time and errors avoided beforehand during the planning stage. Benefit from:

- Redesign, expansion and retrofitting
- Optimisation and restructuring of existing logistics systems
- Drafting of new logistics and solution concepts
- Determination of target quantity structures as the basis of a sustainable planning
- Feasibility studies (including automation and digitalization)
- Planning with state-of-the-art visualization and simulation solutions



Warehouse optimisation – discovering potential, increasing profitability

Our experts will work together with you to analyse your process sequences, assess and develop optimisation potentials, create a catalogue of measures to improve your internal logistics and also guide and assist their implementation:

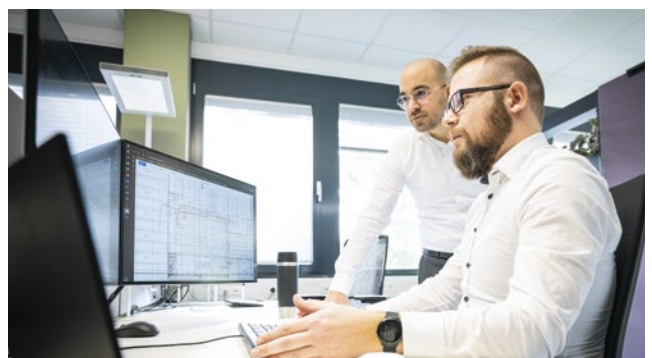


- Detailed material flow and process analysis
- Identification of cost drivers and measures for cost reduction
- Optimization of warehouse space assignment and allocation strategies
- Increase in picking capacity and productivity
- Accompaniment and implementation of the identified potentials

Logistics planning – greater performance, fewer costs

The basis for a successful logistics project is careful planning. EPG Consulting is highly familiar with companies' requirements for efficient logistics planning and the deployment and use of new and established technologies on the market:

- Integral network and location analyses
- Planning and implementation of complete systems
- Material flow and capacity and space planning
- Drafting of specifications (request for proposals and contract award)
- Commissioning and acceptance management
- Outsourcing and insourcing concepts
- Benchmarking



TRANSPORT PLANNING AND OPTIMISATION

Transport planning – transport logistics for the future

In an increasingly competitive business world, freight forwarding and transport companies face challenging tasks such as cutting transport costs, optimising routes and reducing greenhouse gas emissions. We assist companies in overcoming these challenges – we at TMS Consulting combine decades of consulting expertise with intelligent software solutions:

- Reduction of transport costs and carbon emissions thanks to transport and route planning optimisation
- Request for proposals and contract award for transport and logistics services
- Invoice and freight cost auditing and increasing the billing rate
- Implementation of transport management systems



Transport optimisation – reducing costs and improving services

The need for just-in-time deliveries often leads to poor use of transport capacities, which incurs unnecessary costs and is inefficient and not sustainable. This is where our transport consulting services come into play. We will show you the potentials within your current transport flows and networks:



- Transport cost analysis and benchmarking
- Optimisation of transport flows and networks
- Selection of suitable transport modes and mixes
- Increase in capacity utilisation
- Tailored transport concepts

OVERALL PLANNING, CONSTRUCTION AND CLIENT REPRESENTATION

The foundation for your success

EPG Consulting provides comprehensive consulting services in construction and for clients to ensure projects are implemented efficiently and successfully. Our team of seasoned specialists help clients during all stages of the construction process, starting from the design concept and through to implementation and commissioning of building projects:

- Location analysis and selection
- Planning, construction management, and approval procedures
- Project development and supervision
- Energy and sustainability consulting
- Technical specifications (request for proposals and contract award)
- Project management (client representation)
- HVAC and electrical planning
- Fire safety



SATISFIED CUSTOMERS ARE WHAT DRIVE US



flaconi



RATIODATA

VITA



ROSSMANN



sanofi



ESTÉE LAUDER



Infosys



COMMITMENT

+40

HIGHLY QUALIFIED,
EXPERIENCED LOGISTICS
EXPERTS

EXPERIENCE

+60

YEARS OF SUCCESSFUL
CONSULTING PRACTICE

INTERNATIONAL



IMPLEMENTATION OF
CUSTOMER PROJECTS
WORLDWIDE

KNOWLEDGE LEADER

+6.500

PROJECTS SUCCESSFULLY
COMPLETED

TRACK RECORD

+140

PROJECTS INITIATED
IN 2023

PART OF EPG



LEADING PROVIDER OF
INTELLIGENT LOGISTICS
SOLUTIONS

Ehrhardt + Partner Consulting GmbH

Alte Römerstraße 3 | 56154 Boppard-Buchholz | Germany

Phone (+49) 67 42-87 27 0 | Fax (+49) 67 42-87 27 50

consulting@epg.com | www.epg.consulting



Smarter Connected Logistics™